



Friday, October 14, 2016

8:30am - 3:30pm

Duke Jewish Life Center

Durham, NC



North Carolina
A Point-of-Care Network
POCT Shoots for Gold
October 14, 2016









EXIT





EXIT



Name: [unclear]
Address: [unclear]
Phone: [unclear]

Hello!
Carrie Lopez
1000 [unclear] [unclear]
[unclear] [unclear]

AMERICAN
[unclear]



Bill
Bill [Name]
[Title]

Michelle
Michelle [Name]
[Title]

Michelle
Michelle [Name]
[Title]

[Name]
[Name]
[Title]

[Name]
[Name]
[Title]

Tanner
[Logo]

Tanner
[Logo]

North Carolina
[Logo]

Tanner
[Logo]

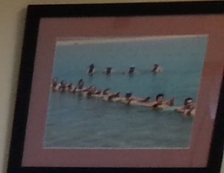
Tanner
[Logo]

Tanner
[Logo]





Harris
Assistant to the President



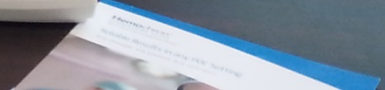


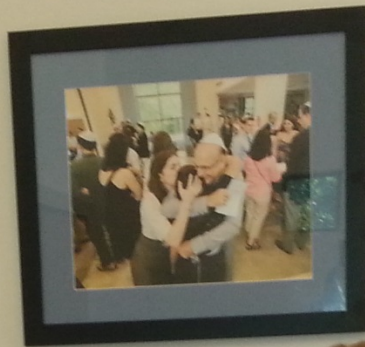
TELCOR

**EVERYTHING,
EVERYWHERE,
POINT OF CARE™**

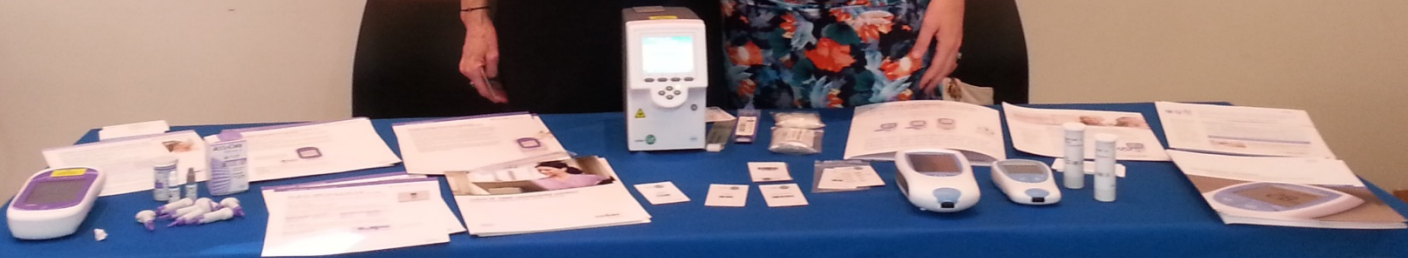
- ✓ Used at 2,000+ hospitals
- ✓ Connecting 120+ device types
- ✓ Only vendor-neutral solution
- ✓ New eLearning interface

A black and white portrait of a woman with blonde hair, smiling, is positioned at the bottom of the banner. The banner has a blue header and footer.





NOVA[®]
biomedical



Point of Care Diagnostics





PATHFAST[®]
Cardiac Biomarker Analyzer

The PATH to better cardiac care starts here.

PATHFAST is validated by reference of up to 1000 samples for the quantitative measurement of Troponin I, Troponin T, Creatine Kinase-MB, D-Dimer, and Myoglobin.

LSI Medicine Corp Verbatim

As Pictured By **MLS**

PATHFAST

PATHFAST[®]
Cardiac Biomarker Analyzer

The PATH to better cardiac care starts here.

Test Menu:
Troponin I
Troponin T
CK-MB
D-Dimer
hCGFP
Myoglobin

#1 for precision among point-of-care analyzers
*Reference: mean test quality results: 95.7% CV for Troponin I at the 99th percentile cutoff
*The simultaneous tests in under 15 minutes
Testing and results unaffected by hemolysis
*Ability to run whole blood or plasma samples
*Up to 1000/lot.

LSI Medicine Corp



PATHFAST[®]
Cardiac Biomarker Analyzer

Manufactured By
LSI Medicine Corporation

Distributed Exclusively By
Verbatim





AlereTM



EXIT



102A
Scharf
Commons

102B



102A
Scharf
Commons

102B

**WILBURN
MEDICAL
USA**

WilburnMedical.com
1-877-WILBURN

Medical Equipment • Supplies • Service



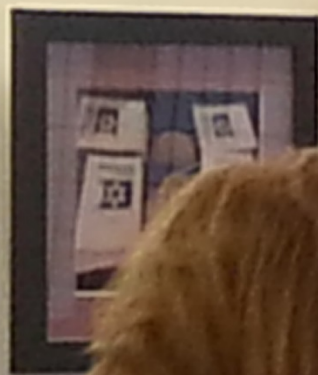
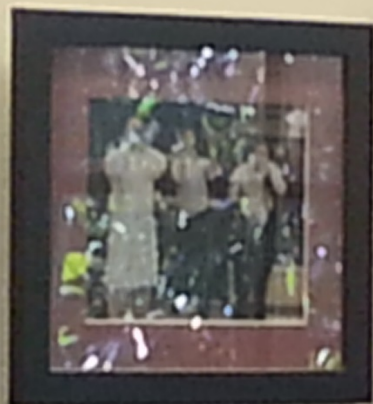


EXIT

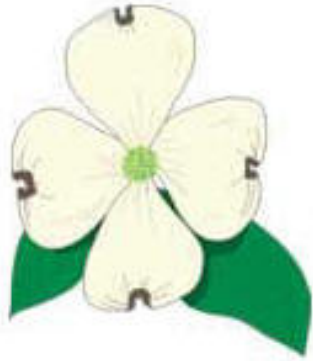
102A
Scharf
Commons



PHOTO
David L. ...
...
...







North Carolina POC Network

Updates on our 2017 Meetings!

We need a volunteer to host our Spring 2017 Meeting!

Our spring meeting kicks off the 2017 slate for the NCPOC Network

Plenty of help is available to provide speakers and formats - we just need a venue!

The meeting can be held anytime between April and May

If you're willing to host the meeting at your hospital,

[please contact Tina Koonce](#) as soon as possible.

And thank you in advance for your commitment to the NCPOC Network!

Our Fall 2017 Meeting will be held at UNC - Chapel Hill!

Many thanks to Lisa Learning for volunteering to host our Fall 2017 meeting and vendor fair at UNC - Chapel Hill. The date is still being worked on but stay tuned to mark your calendar!